



MOHAMED KHALIFA

- GROUP -

- ЕВРОЛЬ -

МОХАМЕД ХАЛИФА

Company Profile



**GOLDENHOUSE**

CONTRACTING  
PURSUIT OF EXCELLENCE  
ПОСЛЕДСТВО ЭКСПЕРТИЗЫ  
С О Н Т Р А К Т И Н Г

## ABOUT US

**GOLDENHOUSE** for Investment Company is a dynamic progressive organization that has grown to become a leader in its industry and has been operating since 2008 .

**GOLDENHOUSE** track record is a prestigious list of efficiently delivered projects.

**GOLDENHOUSE** advantage lies in its ability to bring solutions to the client's requirements in all phases of project planning and execution. GH offers full contracting services and has the flexibility to assist the client by securing additional expertise for feasibility studies, preliminary designs and joint venture partners for optimum project delivery.



MOHAMED KHALIFA

- GROUP -

- Г Р У П П А -

MOHAMED KHALIFA



**GOLDENHOUSE**

CONTRACTING  
PURSUIT OF EXCELLENCE

ПОСЛЕДСТВО ЭКСПЕРТИЗЫ  
СООБЩАЮЩИЕ

## OUR VISION

To be recognized across the region as the most progressive construction and contracting company.

To be an international market leader in the construction and contracting industry through implementing intelligent systems and challenging the limits of construction speed and efficiency while maintaining the highest levels of quality and safety.



MOHAMED KHALIFA

- GROUP -

- ГРУППА -

مجموعة محمد خليفة



**GOLDENHOUSE**  
CONTRACTING  
PURSUIT OF EXCELLENCE  
БЪРСАИЛ ДЪ ЕХСЕЛЕНС  
СОНТРАКТИНГ

## THE GROUP

GOLDEN HOUSE  
CONTRACTING

GOLDEN HOUSE  
REAL ESTATE

GOLDEN HOUSE  
PHARMACEUTICALS

GENUINE  
FOR MULTI ACTIVITIES  
COMPANY

ALMAKAREM  
BUILDING MATERIALS

BRILLIANT  
contracting company

ABOVE DECORATION

ALMAKAREM  
DRUG STORE

BUILDING  
MATERIALS

KALE FOR  
CERAMIC

GH SANITARY  
FIXTURES

GOLDEN HOUSE  
TRADING

SEDAR

IFE

ORKA FOR  
CERAMIC &  
CABINET



## GOLDEN HOUSE CONTRACTING

**GH**'s specialty fields includes:

- Design Development.
- Interior design and execution.
- Infrastructure and civil works construction.
- Turnkey contracting.
- Construction materials procurement and installation.
- Feasibility studies & evaluation
- Building materials (**GH** has agencies for several important factories all around the world in different building materials).

One of **GH**'s specialties is also Fast-track project completion, assuring clients of consistently high standards within record frames.

**GH**'s highly effective management, accurate planning and resource deployment are keys in making these projects possible.

GH has played a significant role in providing outstanding construction services to companies, individuals and government agencies, with our continued commitment to development and change, we look forward to the future and all challenges and opportunities that it will offer.

**STAFF**

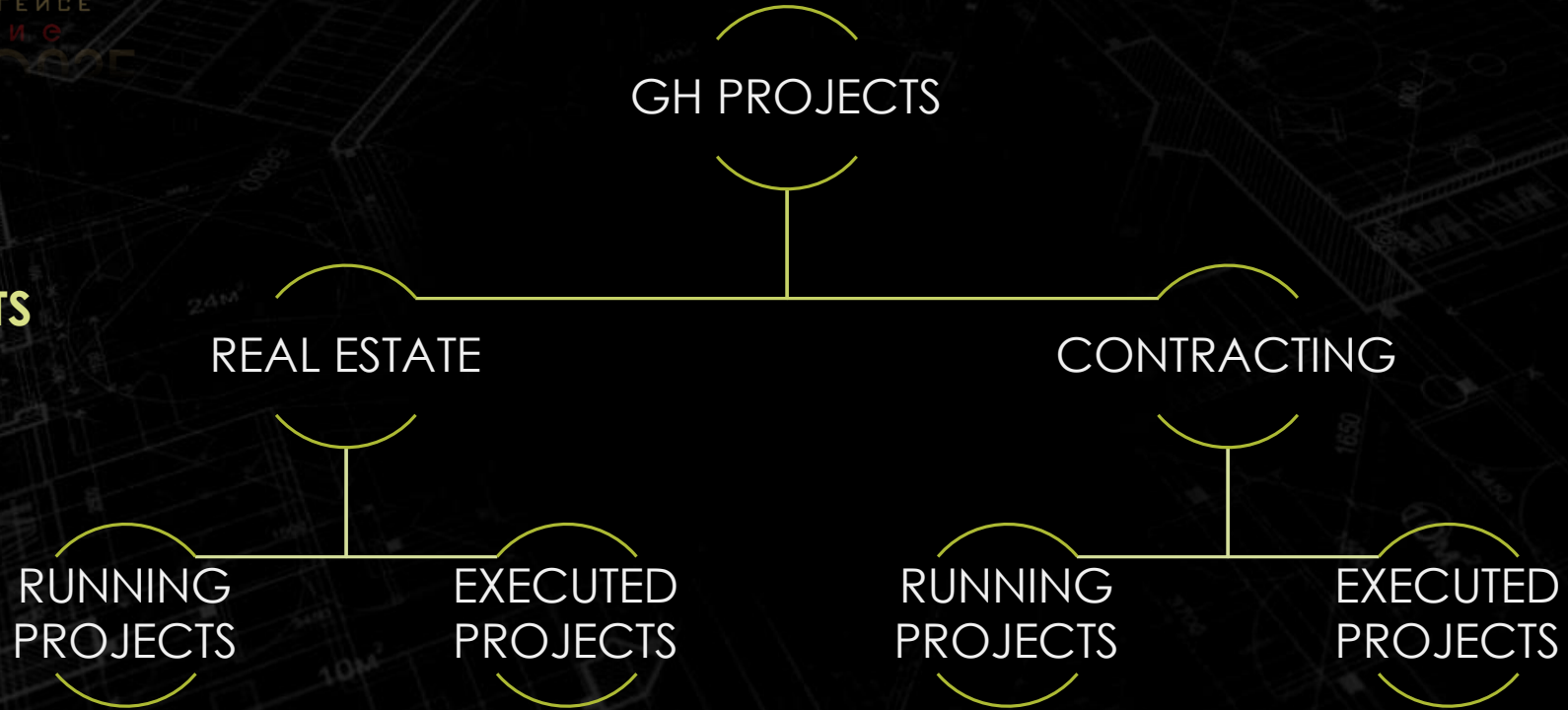
Designation	Quantity
Senior management	2
Administration	8
Financial Department	3
Information Technology	2
Human Resources	2
Engineers	20
Project management	4
Project Engineers	11
MEP Engineers	5
Draftsman	3
Health & Safety	4
Supervisors	6
Store Keepers	12
Mechanics/Electricians/Technicians	40
Drivers	6
<b>Total</b>	<b>128</b>



**GOLDENHOUSE**

CONTRACTING  
PURSUIT OF EXCELLENCE  
ПОСЛЕДСТВО EXCELLENCE  
СОНТРАКТИНГ

**OUR PROJECTS**



**MOHAMED KHALIFA**  
- GROUP -  
- ГРУП -  
- GROUP -



**GOLDENHOUSE**

CONTRACTING

PURSUIT OF EXCELLENCE

ПРЯСЛІІ ОД ЕХСЕЛЛЕНСЕ

СОИВУСТІІЕ

# REAL ESTATE PROJECTS

- RUNNING PROJECTS
- EXECUTED PROJECTS



MOHAMED KHALIFA

- GROUP -

- ГРУП -

МОНАХАЛІІА ХАЛІІА



# RUNNING PROJECTS

- LOCATION: KHARTOUM / Garden city
- NO.OF STORIES: LG+7FLOORS
- TOTAL BUILT AREA: 750 M2



# RUNNING PROJECTS

## EXAVATION & FOUNDATION WORKS





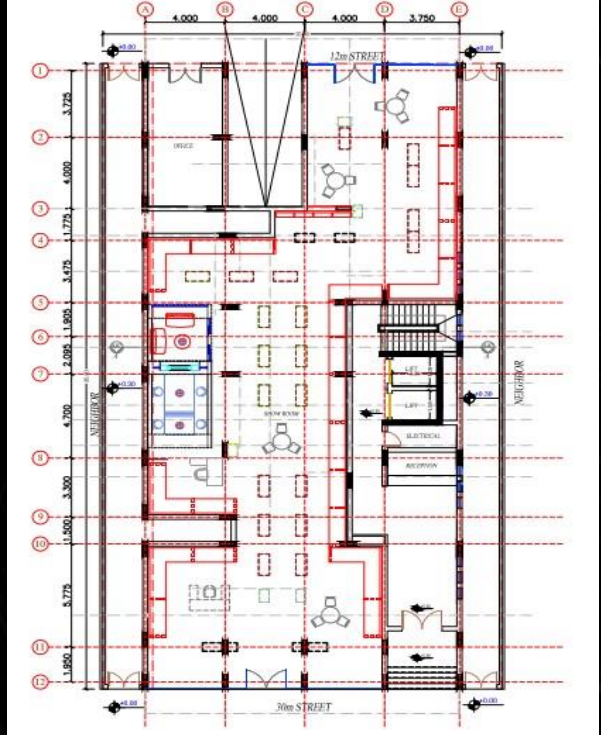
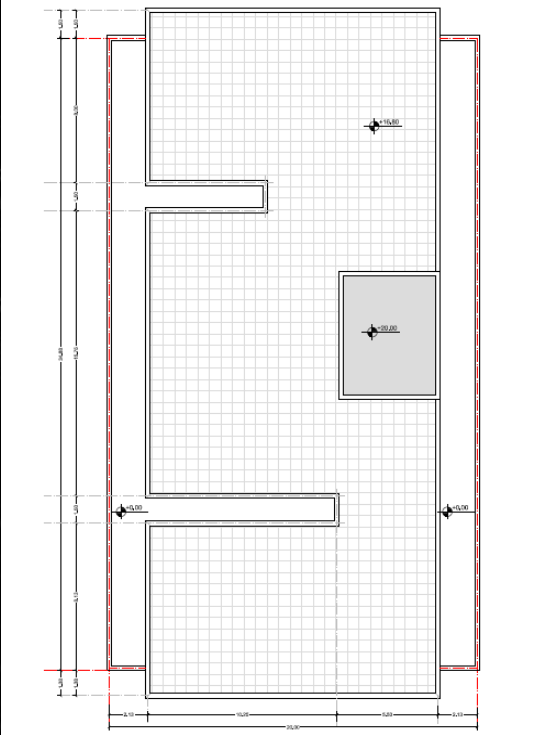




# RUNNING PROJECTS

## INVESTMENT APARTMENTS DESIGN

- LOCATION: KHARTOUM / ALRIYADH STREET 112
- NO. OF STORIES: B+G+7 FLOORS
- TOTAL BUILT AREA: 600M<sup>2</sup>



# EXAVATION & FOUNDATION WORKS



EXTERIOR LIGHTING FOR FACADES





EXTERIOR LIGHTING FOR FACADES



# CEILING WORKS



EXCUTED FINISHING WORKS







SEDAR SHOW ROOM



# SEDAR SHOW ROOM



# RUNNING PROJECTS

## MOHAMED KHALIFA GROUP OFFICES

- Type: KHARTOUM/BURRI
- Contractor : Golden house.
- Scope of work : Design, turn key project.

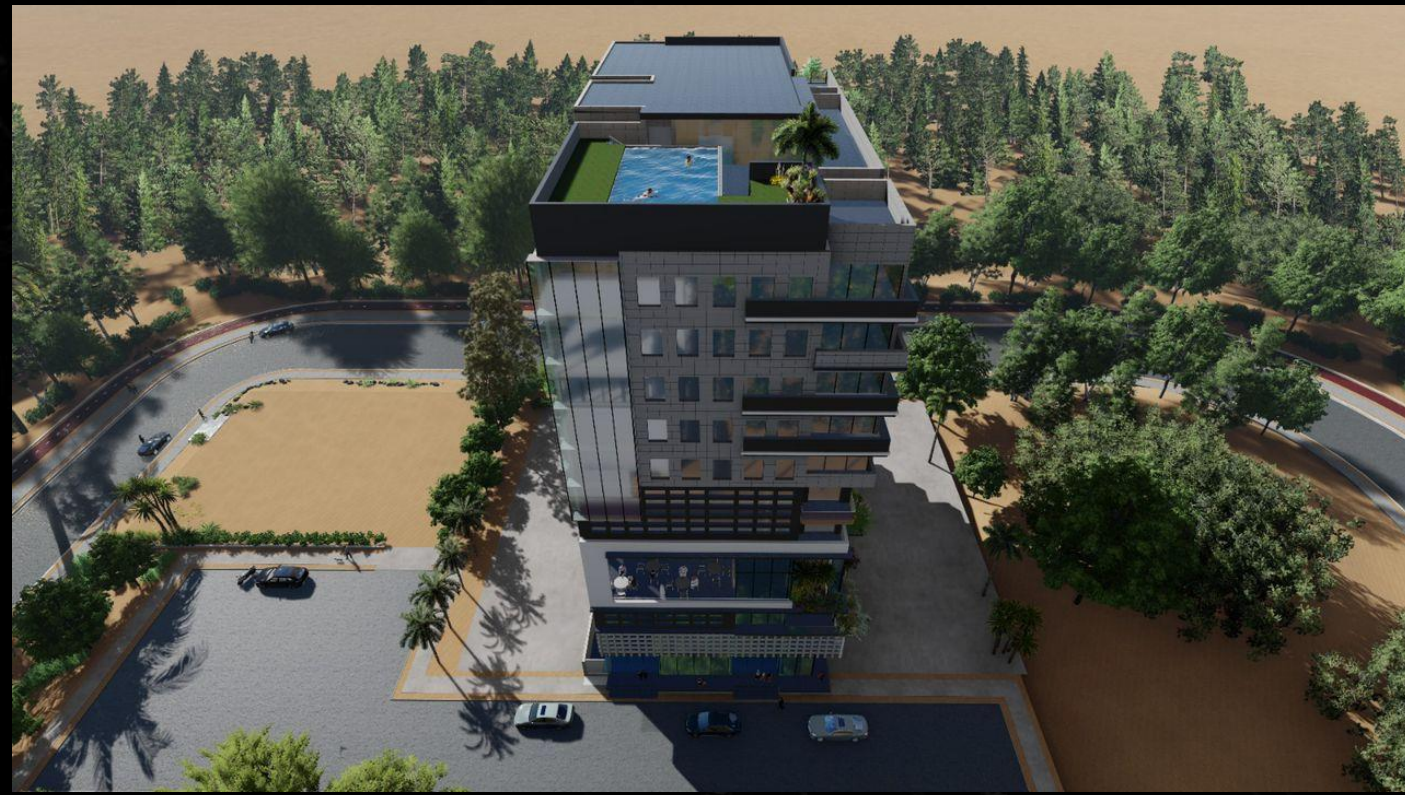




# RUNNING PROJECTS

## GOLDEN RESIDENCE 2

- LOCATION: KHARTOUM / ALRIYADH112
- NO.OF STORIES: G+12FLOORS
- TOTAL BUILT AREA:9,800M2



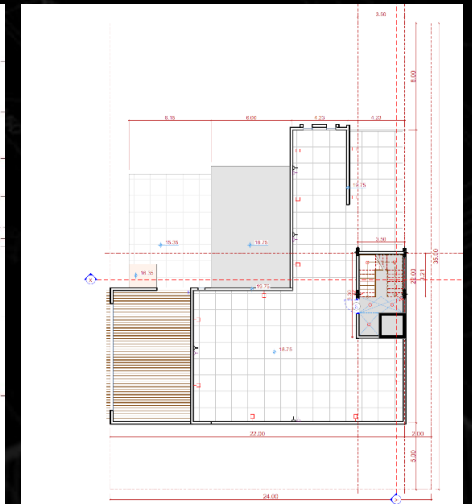
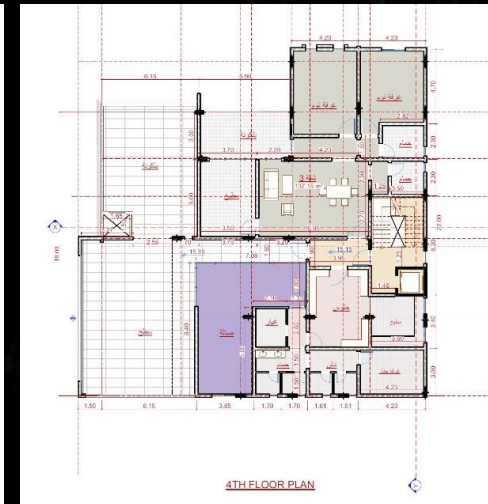
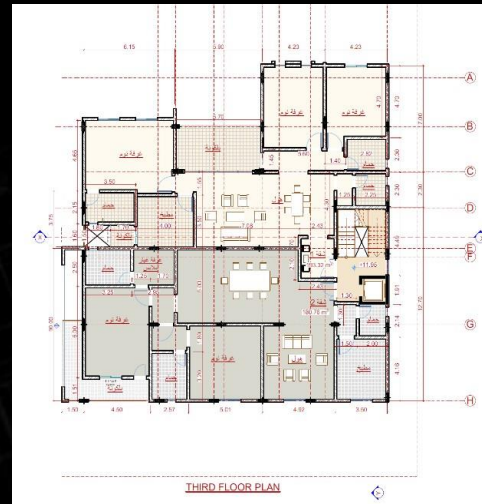
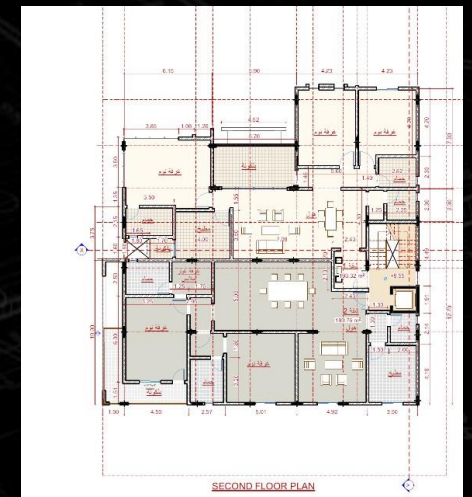
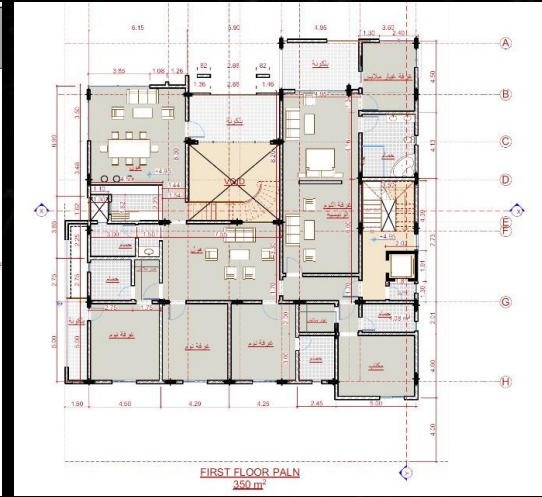
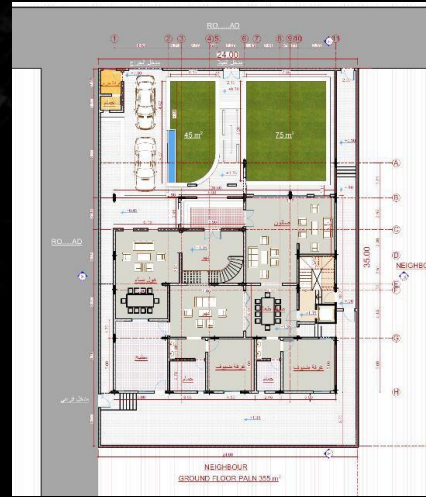




# RUNNING PROJECTS

## PRIVATE VILLA

- LOCATION: KHARTOUM / ALRYADH Block (20)
- NO OF STORIES: G+5 FLOORS
- TOTAL BUILT AREA: 850M2



CEILING WORKS



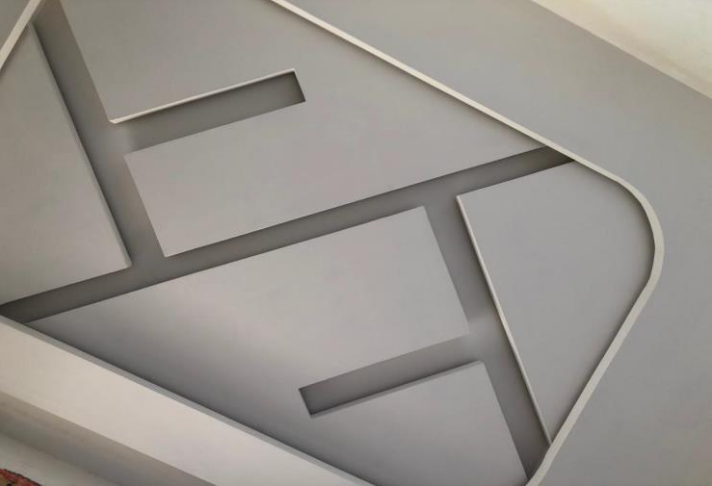
# RUNNING PROJECTS

## SAMASIM

- LOCATION: KHARTOUM / BURRI
- NO. OF STORIES: G + 5 FLOORS
- TOTAL BUILT AREA: 270 M2



CEILING WORKS







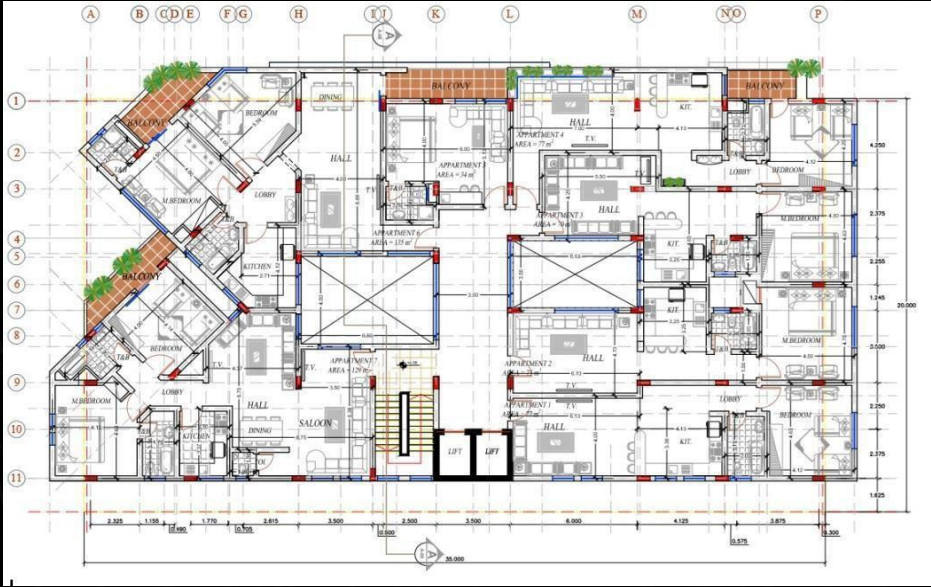
# RUNNING PROJECTS

## HOTEL APARTMENTS

- **Type:** Residential (G+4).
- **Contractor :** Golden house.
- **Scope of work :** Design, turn key project.



• GROUND FLOOR PLAN



TYPICAL FLOOR PLAN

# RUNNING PROJECTS

## SOBA FARM

**-LOCATION:** KHARTOUM / SOBA

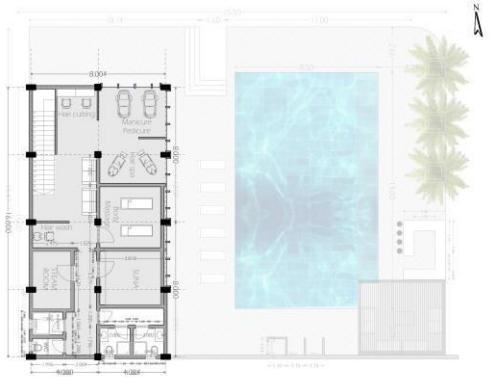
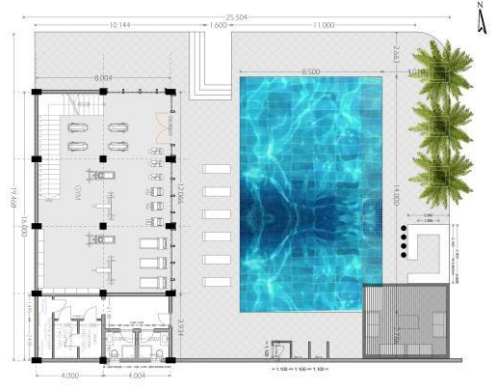
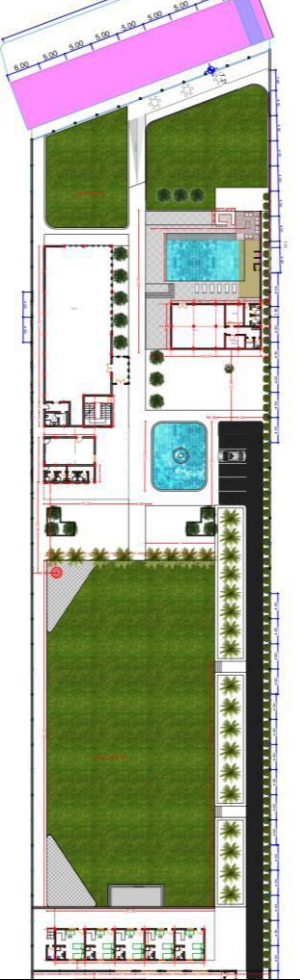
**-TOTAL BUILT AREA:** 11 ACRE [ 46,200 ] M2

Farm components are three zones

**zone 1** – stores.

**zone 2** – Fruit Trees + Play Grounds.

**zone 3** - VIP area: multipurpose hall, gym, swimming pool, VIP guestrooms, and three gardens.



## SWIMMING POOL & GYM

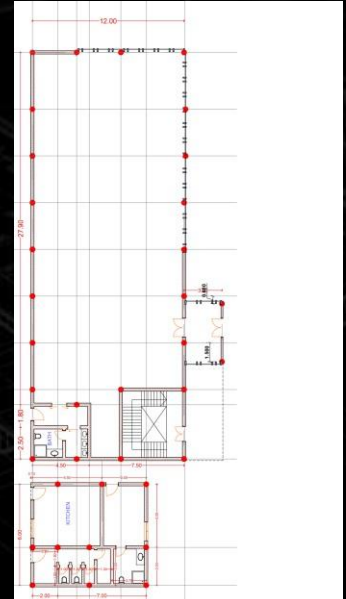
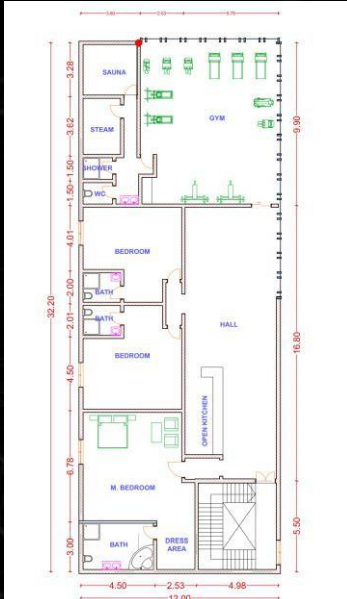
**Ground floor:** GYM

**First floor:** SPA for ladies

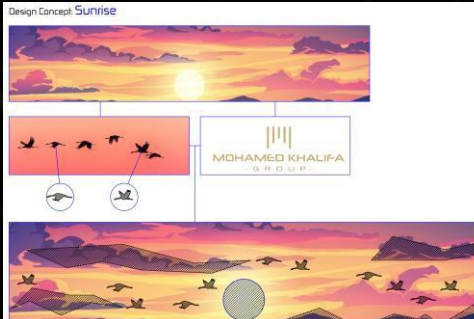
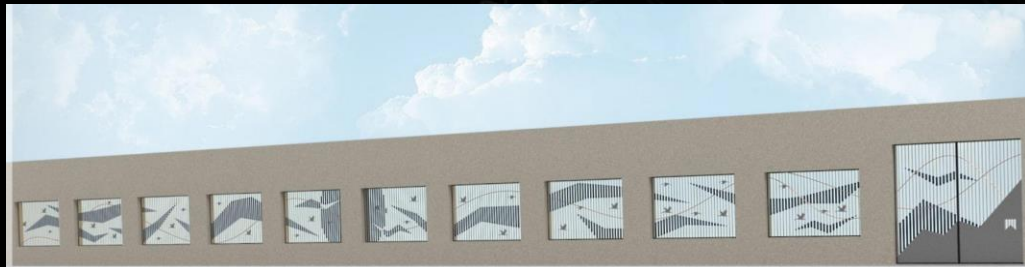
## FARM MULTI PURPOSES HALL

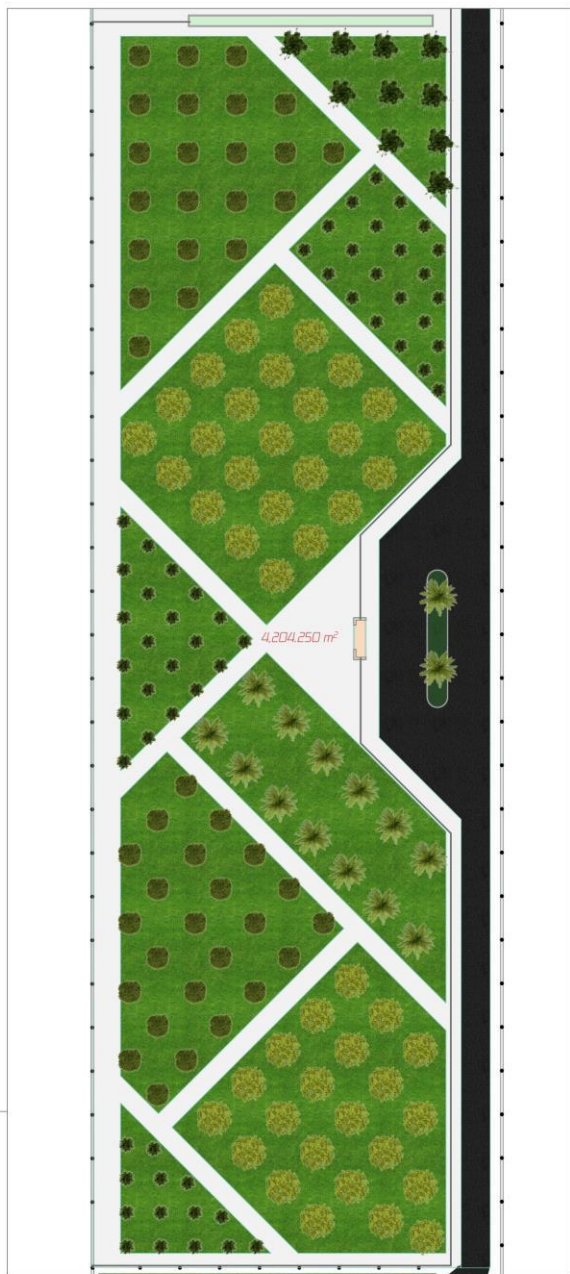
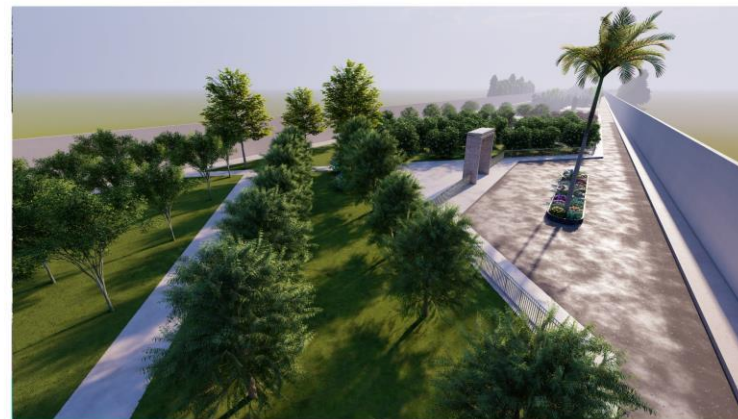
**Ground floor:**  
hall + kitchen + guestroom

**First floor:**  
VIP suites + hall + kitchen

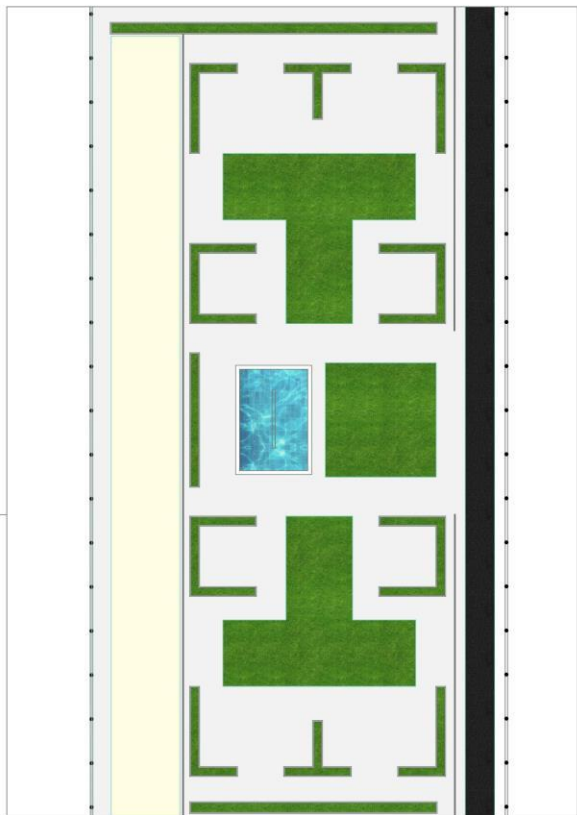


## FARM FENCE











- 1 - Garden
- 2 - Flower Garden
- 3 - Multipurpose Hall
- 4 - Swimming Pool
- 5 - GYM
- 6 - Fountain
- 7 - Green Area
- 8 - VIP Rooms
- 9 - Parking
- 10 - Marina



Flower Garden

Garden



Swimming Pool



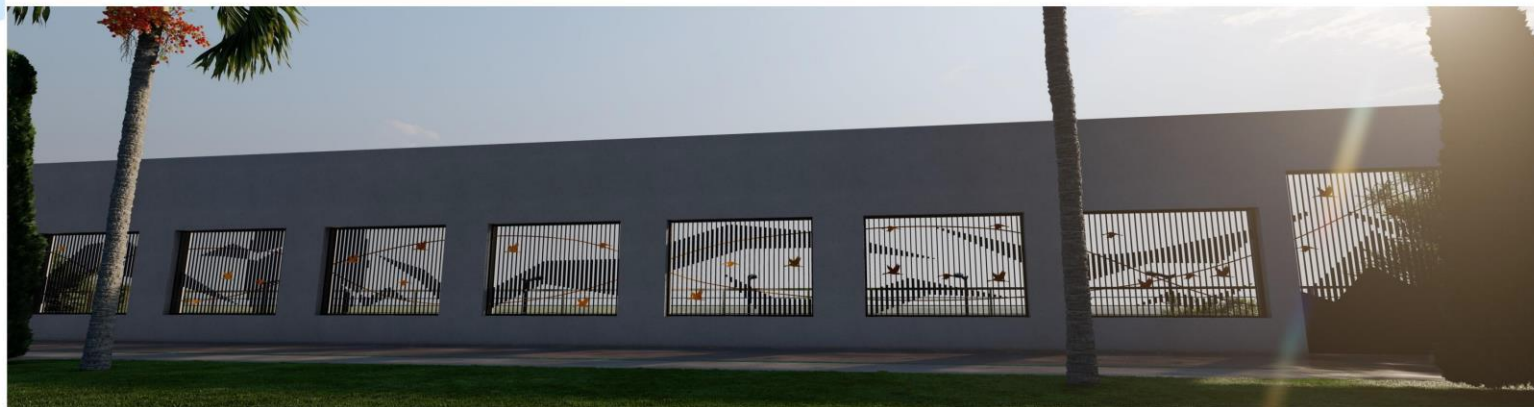
Multipurpose Hal



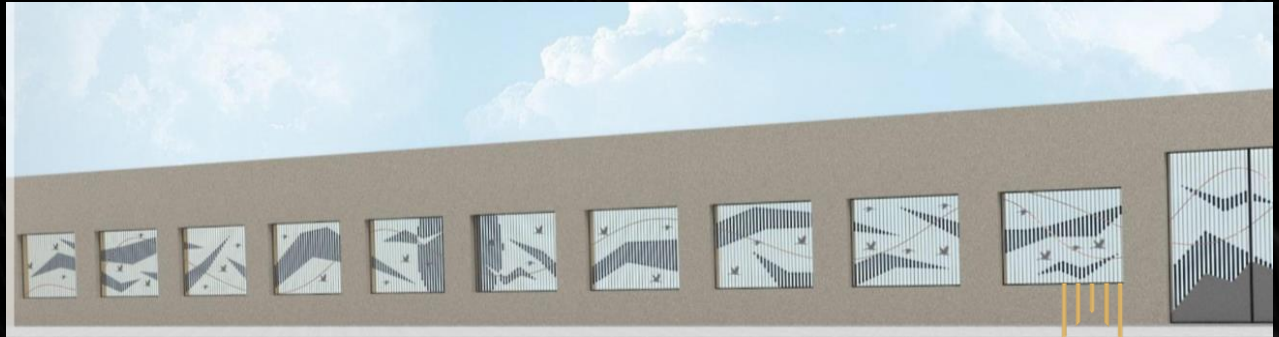
Fountain



GYM



# NILE FENCE





# Main FENCE









**MOHAMED KHALIFA**  
- GROUP -  
- ГРУППА -  
- MOHAMED KHALIFA GROUP -



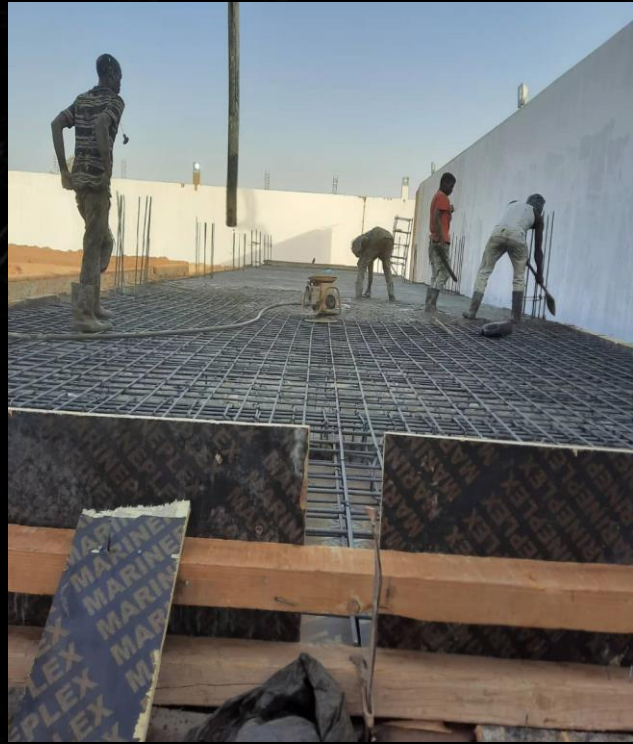
MOHAMED KHALIFA  
- GROUP -  
- ГРУППА -  
MOHAMED KHALIFA

Landscape



# EXAVATION & FOUNDATION WORKS







# EXECUTED PROJECTS

## PRIVATE VILLA

Location: KHARTOUM/ ELJERAIF WEST

Type: Residential (Multipurpose Vila).

- Contractor : Golden house.
- Scope of work : Design, turn key project.



- SWIMMING POOL & GARDEN
- ROOF BBQ AREA



EXCUTED FINISHING WORKS





# EXECUTED PROJECTS

## ALSALAM BANK AFRICA ST. BRANCH

- LOCATION:KHARTOUM/AFRICA STREET
- Consultant :MURTADA MAAZ
- Contractor : Golden House
- Scope of work : EXCUTED.





# EXECUTED PROJECTS

## ALSALAM BANK – ALSOUQ ALSHABI BRANCH

- -LOCATION:KHARTOUM/ALSOUQ ALSHABI
- -NO.OFSTORIES:G+2 FLOORS
- -TOTALBUILTAREA: 393 M2



# EXECUTED PROJECTS

## ALSALAM BANK – ALSJANA BRANCH

- LOCATION: KHARTOUM/ALSJANA
- -NO.OF STORIES: G+2 FLOORS
- -TOTAL BUILT AREA: 314 M2





- FINISHING WORKS:
- CEILING & TILES



# EXECUTED PROJECTS

## Byblos Bank Head Quarter

- Consultant : LA CONSULT.
- Contractor: LA CONSTRUCA.
- Sub-Contractor: Golden House.
- Scope of work : interior works, supply & execution.



# EXECUTED PROJECTS

## MUSHAIRAB - QATARI DIAR - C08 BUILDING

- Project duration: 6 month's
- Consultant : KHATEEB & ALAMI
- Contractor : CCC
- Sub contractor: Golden House
- Scope of work : Interior work - design supply and execution.



# EXECUTED PROJECTS

## Presidential lounge (Khartoum international airport)

- Project duration: 2 month's
- Consultant: CAA.
- Contractor: Golden House.
- Scope of work Interior work, re-design, supply and execution.



# EXECUTED PROJECTS

## MINISTERS Lounge (Khartoum International Airport)

- Project duration: 2 month's
- Consultant: CAA.
- Contractor: Golden House.
- Scope of work Interior work, supply and execution.



# EXECUTED PROJECTS

## Traffic Control rooms

(Traffic police)

- Type: Office building.
- Consultant: POLICE ENGINEERING UNIT
- Contractor: Golden House.
- Scope of work : Exterior ,interior work - design supply and apply.



# EXECUTED PROJECTS (Design)



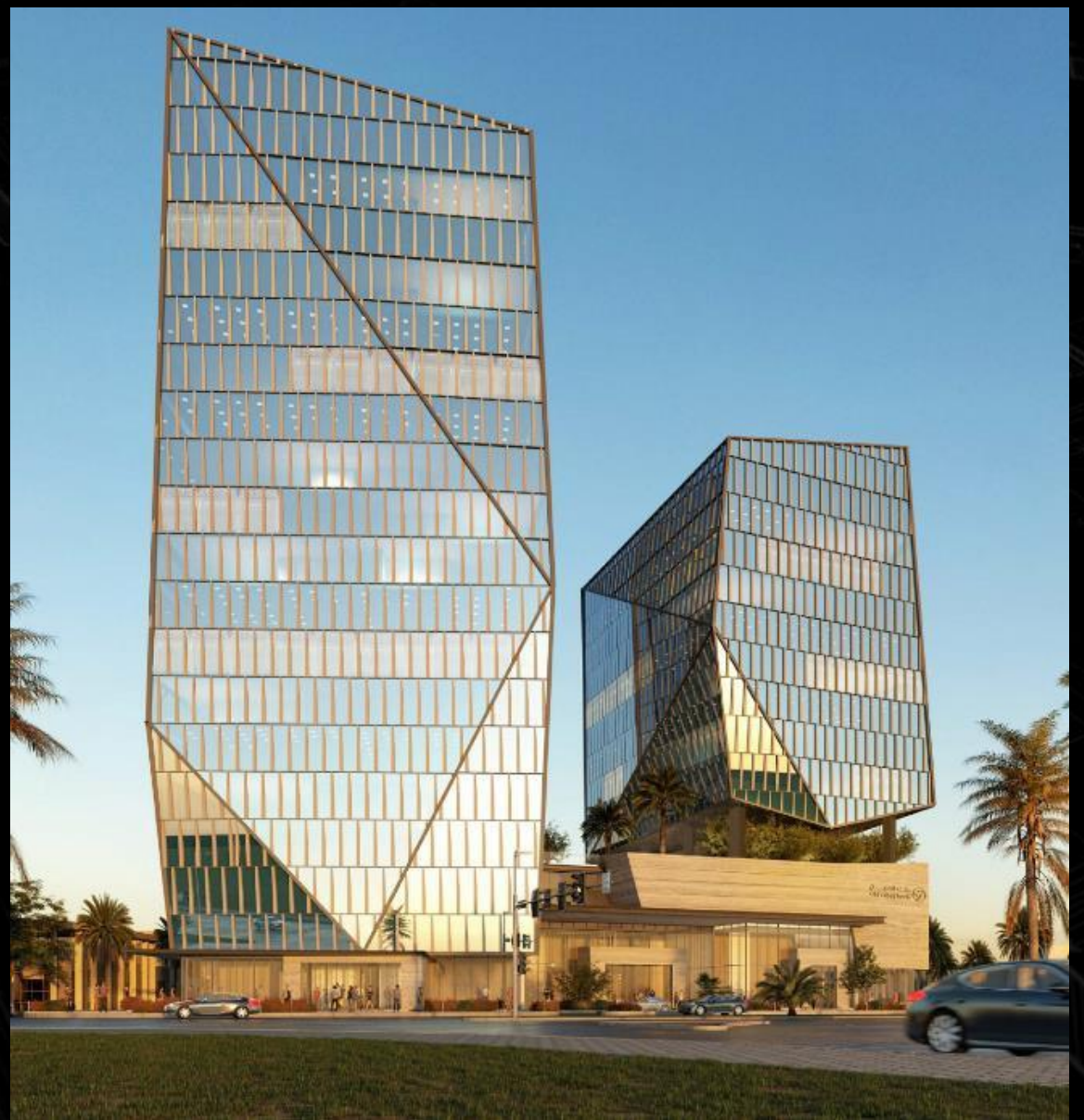
# EXECUTED PROJECTS (Design)

## AL-KHALEEJ BANK HQ + 5 stars hotel

- LOCATION: Africa street opp Khartoum international airport exit road.
- HQ offices : 2B+G+ 13 floors
- 5 stars hotel: 2B+G+16 floors
- 2143 sqm (1103m Hotel+ 673m Bank+ 363m Lobby)  
+









بنك الخولة  
alKhaleej bank



MOHAMED KHALIFA  
- GROUP -  
- ГРУПП -  
- GROUP -

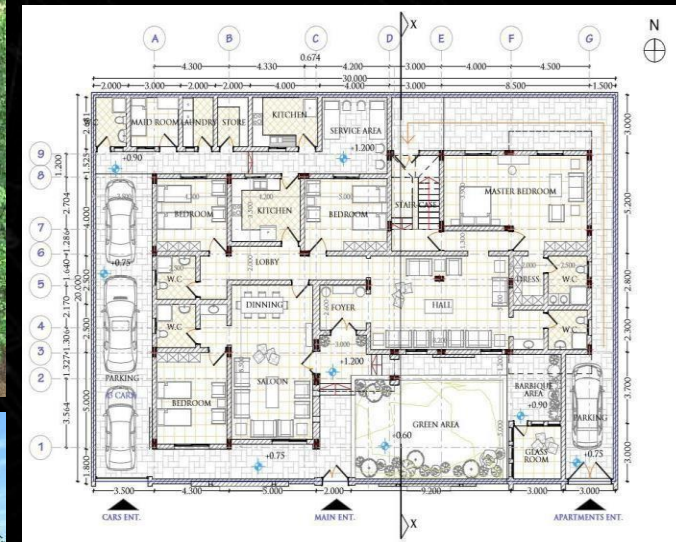
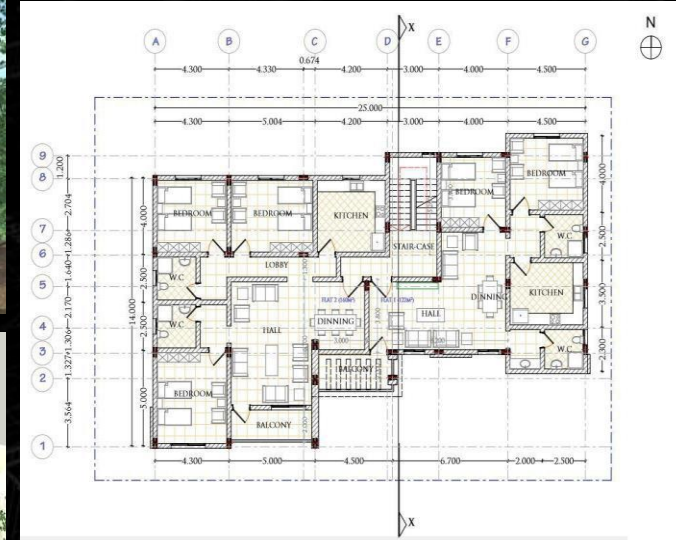




# EXECUTED PROJECTS (Design)

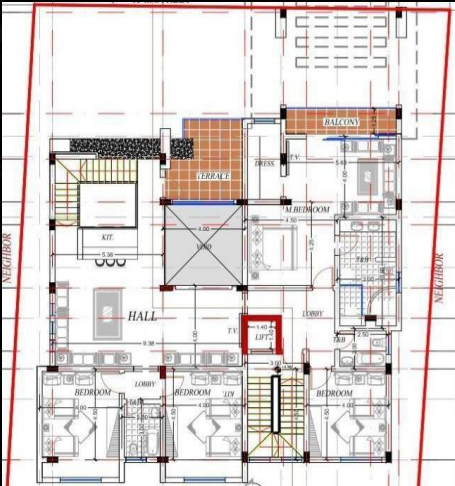
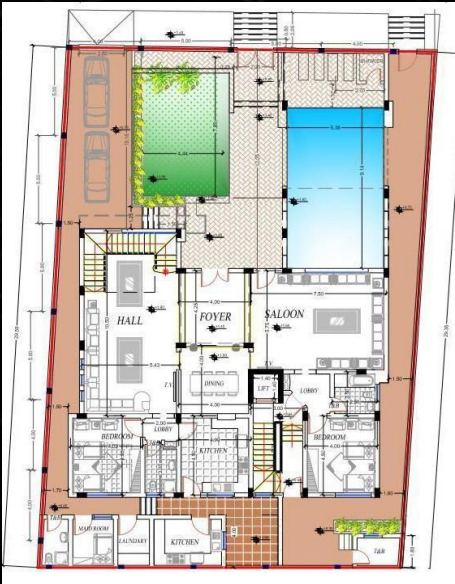
## PRIVATE VILLA DESIGN

- LOCATION: KHARTOUM/ALTAYEF 82
- NO OF STORIES: G+1 FLOOR
- TOTAL BUILT AREA: 295M<sup>2</sup>



# EXECUTED PROJECTS (Design)

## PRIVATE VILLA DESIGN



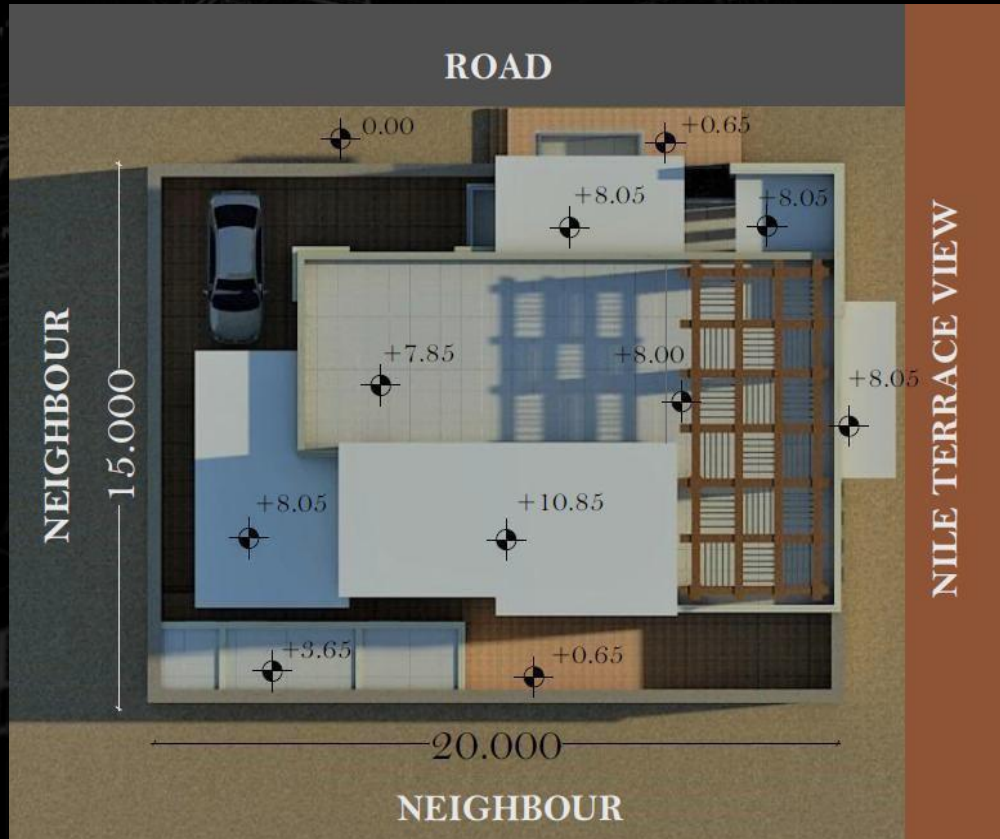
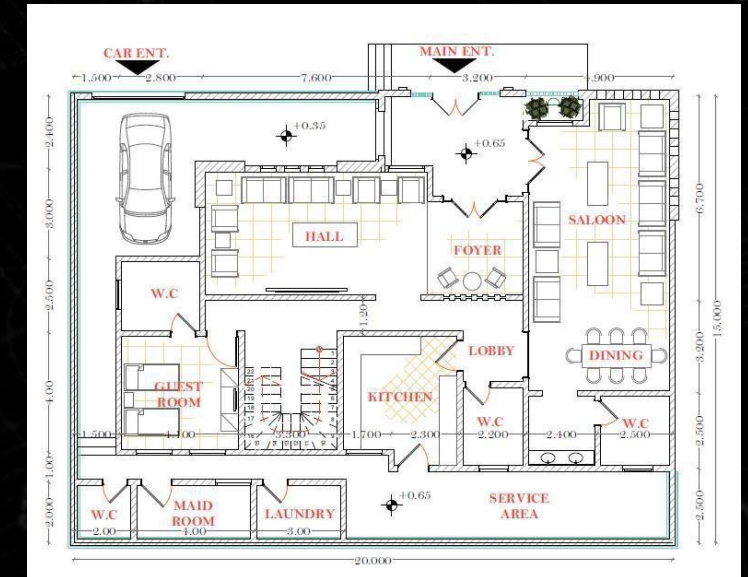
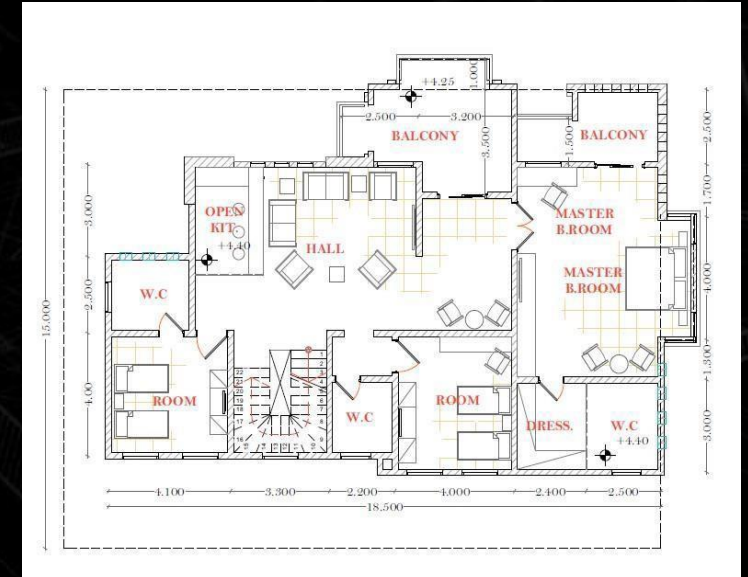
# EXECUTED PROJECTS (Design)

## PRIVATE VILLA DESIGN

LOCATION: KHARTOUM/ALBAGAIR

NO. OF STORIES: G+1 FLOOR

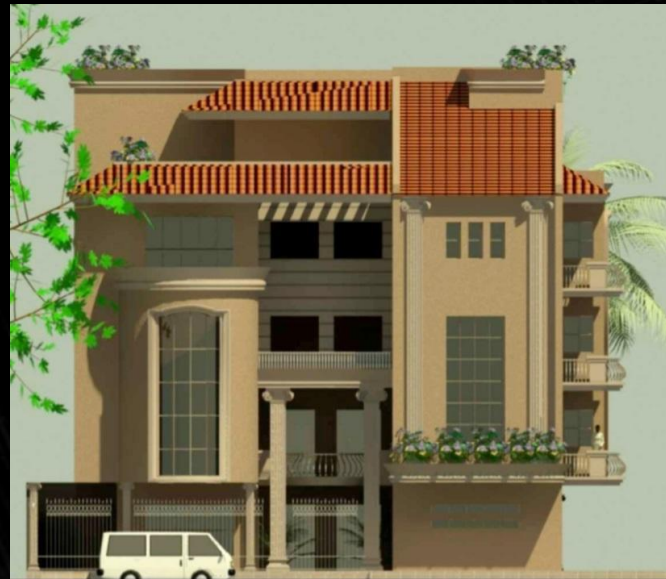
TOTAL BUILT AREA: 205M<sup>2</sup>



# EXECUTED PROJECTS (Design)

## PRIVATE VILLA DESIGN

- LOCATION: KHARTOUM NORTH/ALHALFAYA
- NO OF STORIES: G+3 FLOORS
- TOTAL BUILT AREA: 270M<sup>2</sup>





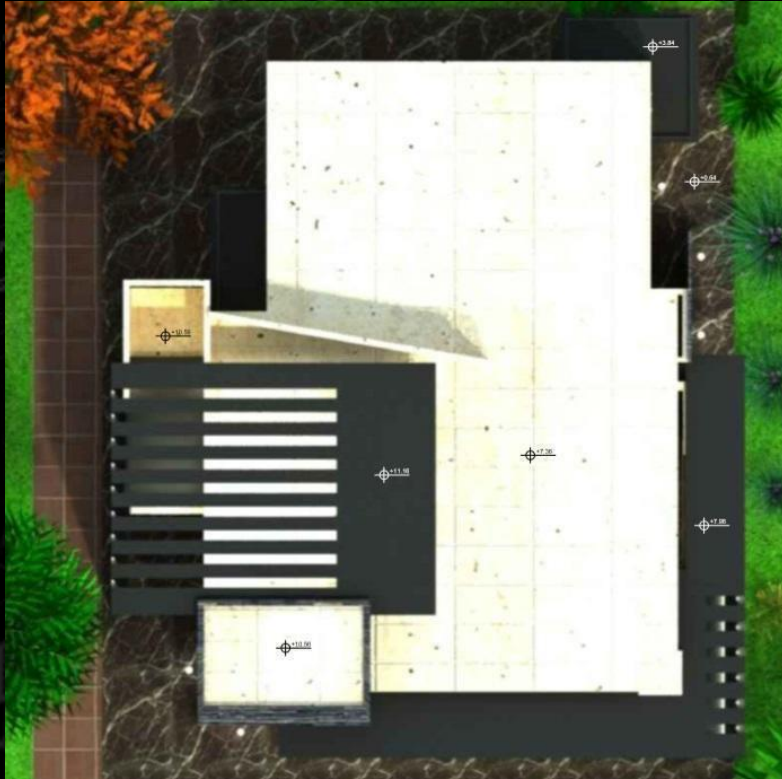
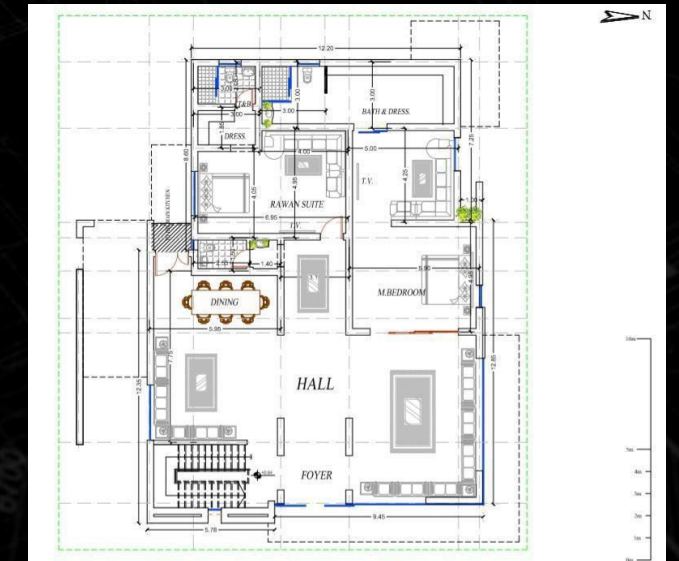
# EXECUTED PROJECTS (Design)

## PRIVATE VILLA DESIGN

LOCATION: ALJAZERA/ MADANI

NO OF STORIES: G+2FLOORS

TOTAL BUILT AREA: 280M2





**MOHAMED KHALIFA**

- GROUP -

- GROUP -

MOHAMED KHALIFA

PURSUIT OF EXCELLENCE

**Address** : Sudan , Khartoum – Garden city

Tel. : +249900244654

**Website** : [www.mkhalifagroup.com](http://www.mkhalifagroup.com)– under construction

**Email** : [info@mkhalifagroup.com](mailto:info@mkhalifagroup.com)

**P.O. Box** : 1911, Khartoum

THANK YOU